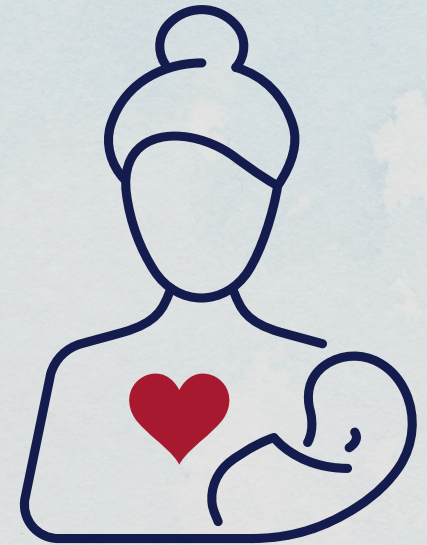


SOUTH BEND COMMUNITY SCHOOL CORPORATION
**SCHOOL-AGE MOTHERS
PROGRAM**



LAFAYETTE BUILDING
245 NORTH LOMBARDY DRIVE
SOUTH BEND, IN 46619
SOUTH BEND, INDIANA
574-393-5850



SAMP offers:

- Small classes
- Supportive environment
- Shorter school days (8:30 a.m. to 2:25 p.m.)
- Free breakfast and lunch
- Daycare
- Graduation requirements
- Community supports such as Medicaid, WIC, Healthy Families, ECHO and Catholic Charities

Early Head Start

Early Head Start (EHS) is a federally funded, community-based program for low-income pregnant women or families with infants and toddlers.

Students in the SAMP Program are able to use EHS for their childcare needs while they take classes. In order to be eligible for EHS, you need a track record of consistent attendance at either your home school or while in SAMP, while maintaining at least a 2.0 (C) grade point average.

If you decide to return to your home high school after you have had your baby, or if you have earned your diploma through the SAMP Program or your home high school and you need childcare, you may be eligible for the Head Start Community Child Care Program. Applications are available through your guidance counselor or Head Start.

Welcome

If you're a pregnant student in the South Bend Community School Corporation and choose not to return to your home high school, the School-Age Mothers Program (SAMP) may be the right choice for you to complete your high school education.*

Designed to help you earn your high school diploma, SAMP is an alternative education program that offers a variety of academic courses. The program is currently housed in the former LaFayette School on South Bend's west side, where the Early Head Start program for infants and toddlers also is available to meet your childcare needs while you're in class.

Taught by certified teachers and other trained professionals, SAMP offers a variety of courses. Students enroll in seven to eight classes each semester, which include a Child Development class. In the future, SAMP plans to expand its course offerings to include Honors, AP, and Career Technical Education (CTE) classes as well.

Interested in learning more? Contact your guidance counselor who can help with referral forms, Early Head Start application, and other details about registration or childcare. Or feel free to call the SAMP Program Supervisor, Karen Patterson, at 574-393-5850.

**Space in SAMP is limited and priority is given to pregnant SBCSC students; however, there are special circumstances under which students who have recently given birth may be eligible to enroll, and will be considered on a case-by-case basis.*

KAREN PATTERSON
SUPERVISOR
574-393-5850
KPATTERSON@SB.SCHOOL